

Congratulations on purchasing North America's newest TPMS Service Tool! Please take a few moments and review this Quick Start Guide as well as the digital User Guide found at www.bartecusa.com. The following information is useful when calling Bartec about your tool. Keep this Quick Start Guide with the tool for future reference.

When calling Bartec USA Tech Support please have the following:

- Serial Number of Tool
- Software Version on the Tool
- Sensor that may have been used
- MMY or VIN of the vehicle being serviced

BARTEC TECHNICAL SUPPORT:

TOLL FREE: [866]407-8767

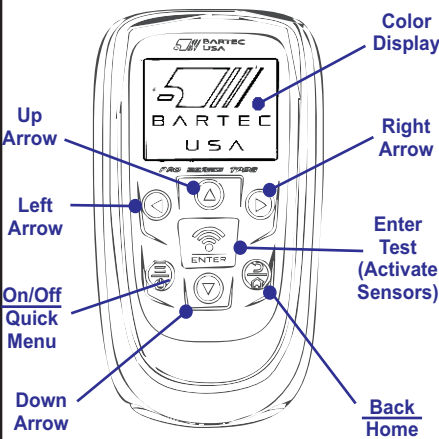
E-Mail: help@bartecusa.com

GETTING STARTED USING YOUR TECH600PRO:

Before Using your Tool:

- 1) Charge your tool [best if done overnight]
- 2) Follow On-Screen Setup Instructions
- 3) Download and install Bartec 365 or TPMS Desktop
- 4) Register your tool
- 5) Set-up your Wireless Connections
- 6) Update your tool to the latest software

Tool Layout:



Key Functions:

- On/Off & Quick Menu Key:** Used to power on and off the device, and allows you to access a quick menu toolkit wherever the three bars are lit.
- Back & Home:** Allows you to single press to go back or press and hold to return to the home menu.
- Enter & Test Key:** Pressing enter allows you to continue to the next screen or press test to test sensors.

Inductive Charging:

Your Pro Series TPMS Tools come with a standard "plug in" style charging adapter. Your tool is also equipped for wireless inductive charging. The desktop Charging Pad and Charging Cradle are purchased separately.



Charging Pad
P/N:
WRTPROQIPAD

Wall Mounted Charging Cradle
P/N:
WRTPROWMC05

Tool Registration using BARTEC 365 or TPMS DESKTOP:

IMPORTANT: The Tech600Pro is required to be registered to get access to:

- Latest Tool Software Updates
- Enhanced Tech Support
- Service Data for Reports



To create your Bartec account and/or register your tool, download Bartec 365 or TPMS Desktop.

If using Bartec 365 to register please watch the following video:

<https://youtu.be/A8cZHknhpl?si=bUh8GVHvyuTDHmla>

To download Bartec 365 click here:

<https://api.bartecautoid.com/bartec-365-link/>

if using TPMS Desktop to register please watch the following video: <https://youtu.be/RAiEnhiJSS0>

To download TPMS Desktop (Windows Only) here: <https://tools.bartecusa.com/tpmsdesktop/publish.htm>

Connecting to WiFi :

Connect to the WiFi to update your Tech600PRO. The tool will automatically check for updates when connected to a WiFi network.

Select Settings, CONNECTIONS, WiFi, it will be highlighted red. Press enter and tool will begin searching for available networks to join.



Select desired network [highlighted red] and press enter to connect.



Enter the network password using the arrow keys to select the letters/numbers of your choice. Press the return key (circled in yellow) to complete connecting.

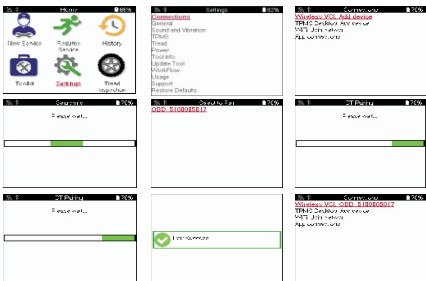


Once connected, the tool will prompt you to check for updates.



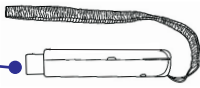
Connecting your Wireless VCI:

The Tech600PRO comes with a Wireless Vehicle Communication Interface (VCI). To pair the VCI to the Tech600PRO, connect it to any OBD II port found on any passenger car and light duty truck. Follow the instructions on the tool to pair.



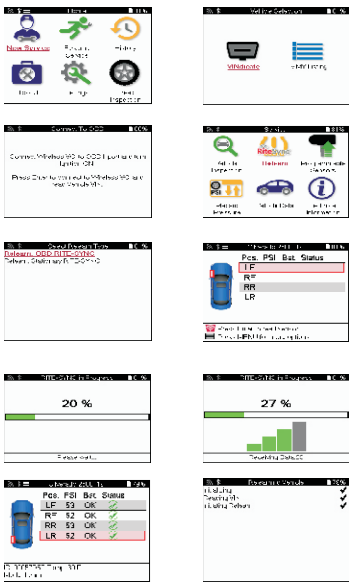
If using a secondary Wireless VCI please return to the connections page to remove the first VCI in order to pair a second VCI. **The Tech600PRO will only connect to ONE VCI at a time.**

Spare VCI
P/N:
WRT600PROVCI01



TPMS Relearn:

TPMS Relearns are the method used to reset or "re-sync" the TPMS system. Bartec recommends to ALWAYS complete the TPMS Relearn following any service. Please note, the vehicle may need to be driven up to 20 minutes for the system to recalibrate.



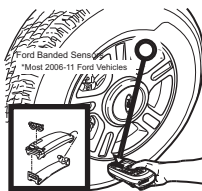
Tool Positioning:

Valve Stem Mounted Sensors Please review below to ensure you are using the proper positioning. For more information, please download and refer to your user guide. For valve stem mounted sensors, the tool should be located on the tire pointing at the sensor as shown.



Banded Sensors

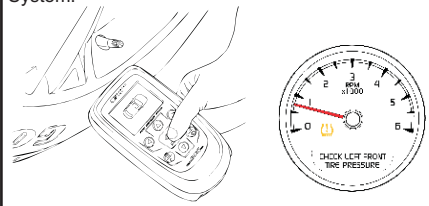
Ford used Banded sensors from 2006-2011 (and later on the Crown Victoria). These sensors are mounted on a band in the drop center of the wheel and should be 180 degrees opposite of the valve stem. If you are not getting a reading, reposition the tool as the sensor may have rotated in the wheel.



180 Degrees Opposite Valve Stem

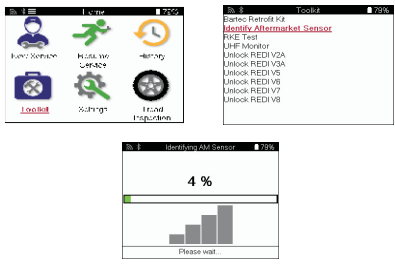
Test Sensors:

Test Sensors - The TPMS Health Check! Following the on screen prompts, the tool will guide you through getting the status of the TPMS System.



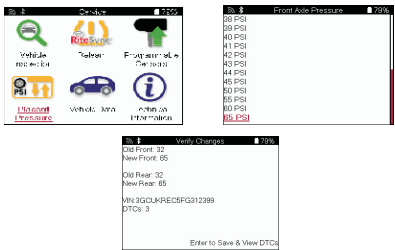
Identify Aftermarket Sensor:

Identify Aftermarket Sensor is used to identify aftermarket sensors fitted in a wheel and tire. The Tech600PRO will search for:RITE-SENSOR®, Ez-Sensor®, Intellisens® and More.



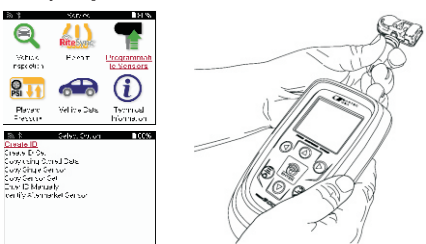
Placard Pressure:

Adjust the Placard Pressure when necessary for different wheel/tire size.



Sensor Programming:

After selecting a Make, Model and Year, access this menu for Aftermarket Sensor Programming [not Rite-Sync®].



RITE-SYNC®

RITE-SYNC® combines sensor programming and vehicle relearn steps. This process make the job easier, faster and more accurate. If programming the RITE-SENSOR® with out using RITE-SYNC® the RITE-SENSOR® will program in less then 3 seconds.



Scan the QR to watch a video